



# Miriad Quest Leisure

## Accessories Catalogue 2024

# CONTENTS PAGE



<b>OUTDOOR FURNITURE.....03-25</b>	TOILETS & FRESH UP SETS.....47
LIBERTY CHAIRS.....03	DAMP CONTROL.....48-49
QUEST ELITE VIENNA PRO.....04	WATER PURIFICATION.....50
QUEST ELITE BORDEAUX PRO.....05	ALDE ANTIFREEZE.....51
QUEST ELITE RAGLEY PRO.....06	<b>FLOORING &amp; MATS.....52-55</b>
QUEST ELITE NAPLES PRO.....07	<b>GROUND PEGS.....56</b>
QUEST AUTOGRAPH BLACK EDITION.....08-09	<b>WINDBREAKS.....57-58</b>
QUEST ELITE KEW RANGE.....10	<b>VEHICLE ACCESSORIES.....59-66</b>
CANTERBURY RANGE.....11	<b>ELECTRICAL.....67-69</b>
HYGROVE RANGE.....12	SITE LEADS.....67
TABLES.....13-15	FANS & PURIFIERS.....68-69
JET STREAM.....16	<b>HEATERS.....70-71</b>
SPEEDFIT.....17	<b>LIGHTING.....72-75</b>
SUPERLITE.....18	<b>SKYPOD.....76-77</b>
WESTFIELD.....19-22	<b>AWNINGS.....78-93</b>
KIDS FURNITURE.....23	WESTFIELD.....78-80
FURNITURE ACCESSORIES.....24-25	WESTFIELD DRIVE AWAY.....81-82
<b>HOUSEHOLD.....26-39</b>	WESTFIELD ACCESSORIES.....83-86
LIBERTY KETTLES.....26	QUEST AWNINGS.....87-91
APPLIANCES.....27-28	AWNING ACCESSORIES.....92-93
MELAMINE.....29	<b>SCREENHOUSES &amp; SHELTERS.....94-95</b>
GLASSWEAR.....33-34	<b>FABSIL TENT &amp; AWNING CLEANER.....98</b>
<b>WATER.....41-42</b>	<b>QUEST KILLS BUG PROTECTION.....99</b>
<b>CLEANING.....43-52</b>	<b>GAS.....100</b>
VEHICLE CLEANING.....43	<b>TOYS &amp; GAMES.....101-102</b>
ULTRA GRIME WIPES.....44	<b>GINO PIZZA OVENS.....103-105</b>
THETFORD.....45-46	Gas Bank .....106
ELSAN CHEMICALS.....46	

## MIRIAD QUEST LEISURE

MON - FRI 8:30-17:00

01283 586060

SALES@MIRIAD-PRODUCTS.COM

WWW.MQL.CO.UK

84 DOVEFIELDS INDUSTRIAL ESTATE

UTTOXETER, STAFFORDSHIRE

ST14 8HU



# Outdoor Furniture

## Liberty Leisure



### Liberty Leisure Comfort Chair

**NEW  
ITEM**

The ultimate blend of comfort, durability, and convenience. Crafted with a robust steel frame, this chair offers unparalleled stability and support, ensuring it stands up to the rigors of outdoor adventures.



LLCC-5



LLCC-4



LLCC-3



LLCC-2



LLCC-1



### Liberty Leisure Folding Chair

**NEW  
ITEM**

The perfect blend of strength, and convenience. This chair is crafted to support up to 110kg ensuring robust stability for a wide range of users. Despite its impressive weight capacity, the chair itself is remarkably lightweight.



LLFC-5



LLFC-4



LLFC-3



LLFC-2



LLFC-1



### Liberty Leisure Directors Chair

**NEW  
ITEM**

The perfect blend of strength, and comfort. This chair is crafted to support up to 100kg ensuring robust stability for a wide range of users. The chair features a fold out side table and storage pocket for small items like keys or a mobile phone.



LLDC-5



LLDC-4



LLDC-3



LLDC-2



LLDC-1

# Outdoor Furniture

## Quest Elite Vienna Pro



**Relax XL chair with side table**

F1363



**Recline with side table**

F1361



**Comfort chair with side table**

F1362



**Lounge bed with side table**

F1364



**Rest leg extension**

F1365



**Double Snug**

F1368

# Outdoor Furniture

## Quest Elite Bordeaux Pro

A stepless relaxer with amazing levels of comfort and functionality, now featuring an extra wide seat for added space and comfort. It features the premium Q-TEX padded 2D mesh fabric which gives you cushioned and padded comfort, class leading durability and excellent weather resistance. The chair has a stepless full recline giving you the maximum amount of adjustability, allowing the perfect position every time.



**Relax XL chair with side table**

F1343



**Lounge bed with side table**

F1344



**Double Snug**

F1348



**Comfort chair with side table**

F1342



**Rest leg extension**

F1345

# Outdoor Furniture

## Quest Elite Ragley Pro

An excellent, full recliner, the Ragley Pro Relax gives you amazing levels of comfort thanks to the stepless full recline and comfort elastics. It features the latest generation of the premium Q-Tex 2D mesh fabric which gives you cushioned comfort, class leading durability, weather resistance and all-weather usage. The chair has a stepless full recline giving you the maximum adjustability, allowing the perfect position every time.



**Relax chair with  
side table**

F1303



**Lounge bed with  
side table**

F1304



**Recline chair with  
side table**

F1301



**Comfort chair with  
side table**

F1302



**Rest leg extension**

F1305



# Outdoor Furniture

## Quest Elite Naples Pro



**Relax XL chair with  
side table**

F1323



**Recline with side  
table**

F1321



**Comfort chair with  
side table**

F1322



**Lounge bed with  
side table**

F1324



**Rest leg extension**

F1325



**Bench with side  
tables**

F1327

# Outdoor Furniture

## Quest Autograph Black Edition



**Cleveland Chair**

F3030BL



**Kent chair**

F3025BL



**Surrey Chair Black & Grey**

F3027B



**Surrey chair**

F3027BL



**Devon stool and foot rest**

F3029BL



**Norfolk High Camp Bed**

F3036BL



# Outdoor Furniture

## Quest Autograph Black Edition



**Concert Chair**

F2050BL



**Festival Chair**

F2051BL



**Atlas Carry Cart  
trolley**

F2063BL



**Cumbria Chair**

F3020BL



**Dorset chair**

F3021BL

**MORE  
INFORMATION  
AVAILABLE  
ONLINE**



**MQL.CO.UK**

# Outdoor Furniture

## Quest Elite Kew Range



**Bliss Relax Chair  
Grey**

F6022GR



**Bliss Relax Chair  
Cream**

F6022CR



**Bliss Relax High Back  
Chair Grey**

F6021GR



**Bliss Relax High Back  
Chair Cream**

F6021CR

# Outdoor Furniture

## Canterbury Range



**Canterbury Relaxer**

F2120  
Plus - F2120



**Canterbury Canopy Relaxer**

F2122  
Plus - F2123



**Canterbury Lounge**

F2124



**Canterbury Recline**

F2125



**Canterbury Captains Chair**

F2127



**Canterbury Table**

F2129



**Canterbury Swinging Bench**

F2128

**NEW!**



# Outdoor Furniture

## Hygrove Range



**Hygrove Relaxer**

LL1612

- Size: 64 x 70 x 113cm
- Folded: 62 x 13 x 95cm
- Seat height: 48cm
- Seat width: 58cm
- Weight: 7.3 kg
- Max load: 120 kg



**Hygrove Recline**

LL1613

- Size: 60 x 59 x 113cm
- Folded size: 60x 9x103cm
- Seat height: 45 cm
- Seat width: 46 cm
- Weight: 4 kg
- Max load: 120 kg



**Hygrove Table**

LL1611

- Size: 52 x 48 x 48cm
- Table Size: 48 x 48cm
- Table Height: 52cm
- Max load: 30 kg

# Outdoor Furniture

## Tables



**Liberty Leisure  
Wooden Table**

120 x 60cm - LL2500



**Liberty Leisure  
Wooden Table**

80 x 40cm - LL2501



**Liberty Leisure  
Wooden Table**

60 x 40cm - LL2502



**Liberty Leisure  
Wooden Table**

60 x 40cm - LL2503



**NEW!**

**Liberty**  
LEISURE

# Outdoor Furniture

## Tables

**NEW!**



**Brenig Slatted Table 90 x 50 x 71cm**

F4006BL



**Derwant Slatted Table 140 x 80 x 70cm**

Black - F4004BL  
Light Wood - F4002LW



**Neagh Slatted Table 115 x 80 x 72.5cm**

Light Wood - F4002LW  
Black - F4002BL



**Lomond Slatted Table 90 x 70 x 71cm**

Light Wood - F4000LW  
Black - F4000BL



**Colliford Slatted Table 122 x 70 x 76cm**

F4008BL



**Rutland Lightcomb Table 100 x 70 x 77cm**

F4010BM



# Outdoor Furniture

## Tables



**Fleetwood High  
plastic table grey**

60 x 80cm - F0016G



**Fleetwood Low  
plastic table grey**

52 x 37cm - F0018G



**Fleetwood Master  
table**

60 x 80cm - F0019G



**Fleetwood Slatted  
side table**

44.5 x 38.5cm - F0020G



**Flora 5 piece set  
(Anthracite)**

F6030AN



**Flora 7 piece set  
(Anthracite)**

F6031AN



**Flora 5 piece set  
(Espresso)**

F6030EX



**Flora 7 piece set  
(Espresso)**

F6031EX



**Stick Table**

092000

# Outdoor Furniture

## Jet Stream

The Jet Stream range are a full weather proof blow mould range of furniture. The entire range is manufactured using a process called blow mould. This makes the table top completely waterproof, extremely durable and will last for years. The material is finished off in a high quality wood grain effect giving the items a great look as well as outstanding performance.



**Fairfield table**

80cm - F0103



**Scafell chair**

F0100



**Helvellyn table**

180 x 75cm - F0101



**Skiddaw table**

118 x 61cm - F0102



**Grassmoor set**

108 x 60cm - F0104

# Outdoor Furniture

## SpeedFit (Onyx Edition)

A premium quality table. It features an all black effect shower proof top and four adjustable height legs. It folds away into the table top and with its integrated handle is easy to store and carry. The small size makes it great for camping, outdoors and certain garden furniture as it is the ideal height for using next to a lower style of chair.



- Premium Quality.
- Ideal Height.
- Lightweight.
- Easily Portable.

- Adjustable Feet.
- Folds Away.
- Integrated Handle.
- Small Folded Size.

**Evesham table**

34 x 56cm - F4843ON



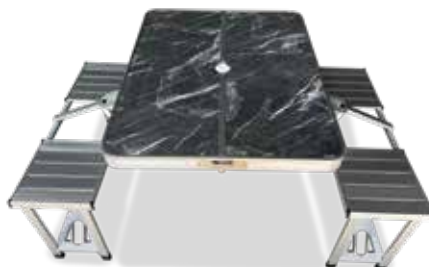
**Brean folding table**

90 x 60cm - F4845ON



**Cleeve folding table**

80 x 40cm - F4849ON



**Gloucester deluxe folding picnic set**

F4850ON  
133 x 86 x 67cm



**Langford folding grill table**

F4851ON



# Outdoor Furniture

## Superlite

The Quest superlite range of tables are a range of extremely light and portable tables that are high quality, easy to carry, store and use. The new black edition brings in a new improved frame which is stronger and more stable along with an improved finish and a great new pro look.



**Elsfield Stool/Table**

F0116B  
39 x 39 x 47 cm

**Stow Folding Table**

F0112B  
120 x 60cm



**Shipston Folding Table**

F0113B  
70 x 50 cm

**Burford Folding Table**

F0114B  
80 x 60 cm

**Witney Folding Table**

F0115B  
64 x 42 cm

# Outdoor Furniture

## Westfield



**Performance  
Royal Ergofit (AG)**

201-880 AG



**Performance  
Advancer**

Anthracite Grey: 201-884 AG  
Mid Grey: 201-884 MG



**Performance  
Advancer XL (AG)**

201-883 AG



**Performance Advancer  
Small (AG)**

201-886 AG



**Avantgarde  
Noblesse (CG)**

101-101 CG



**Avantgarde Noblesse  
Grande (CG)**

101-102 CG

# Outdoor Furniture

## Westfield



Premium reclining chair with an ergonomic backrest & adjustable head cushion which can be used as additional lumbar support or head cushion for even more comfort. Solid arms give you support when getting in and out of the chair, making it easier to use and live with.

The frame is a premium aircraft grade aluminium making it light, but durable and gives it a longer life than its rivals. The strength of the premium frame is shown by the high 140kg max load. It has an advanced powder coating giving it even more durability and giving it a great look and feel.

The fabric is Duradore 2D mesh with padding for the best levels of comfort. The fabric is made fire retardant. The elastic fitting means the chair gives when in use making it even more comfortable.

**Westfield Alicante Chair**

1501001079



**Performance Salina Compact (AG)**

201-898 AG



**Westfield Alicante XL Chair**

1501002079



**Carry Bag for 2 x Royal chairs**

101-788



# Outdoor Furniture

## Westfield



### Performance Aircolite table

Size	Code
80cm	201-27271
115cm	201-27281
120cm	201-27251
100cm	201-27261

The tabletop is the exclusive Aircolite, giving it outstanding performance and durability. The frame is made from premium aircraft grade aluminium which is light and never rusts. It also features the fastfix adjustable legs making it extremely sturdy. Each leg can be individually adjusted to cater for any uneven ground, each leg has 11cm of adjustment to ensure your table will be level and stable. It allows you to use the table at any height between 63 & 75cm.



**5 YEAR  
WARRANTY**



### Table carrybag

Size	Code
100x68cm	201-786
80x60cm	201-787
115x70cm	201-783
120x80cm	201-785

### Westfield Alicante Table

Size	Code
100x68cm	1502002079
80x60cm	1502001079

# Outdoor Furniture

## Westfield

The Focus leg rest is made to compliment the Majestic chairs allowing you to get even more comfort from your chair.

The fabric is DuraDore 2D, the frame is made from premium aircraft grade aluminium which is strong, light and never rusts.

The leg rest also features FastFix adjusters on two of the legs allowing you to adjust them individually.



**BeSmart Focus (DS)  
Alicante Leg Rest**

301-827DS



**Performance Focus  
standalone footrest**

Anthracite Grey: 201-812 AG  
Mid Grey: 201-812 MG



**Avantgarde Oblige  
Leg rest**

101-806 cg



**Performance Focus  
Top**

201-4298



**Avantgarde Oblige  
Top**

101-440

The top allows you to use your leg rest as a table.

The durable tabletop simply clicks into place on top of the leg rest turning it from a leg rest into the perfect table for your furniture.

# Outdoor Furniture

## Children's Furniture



**Tiger Fun Folding Chair**

5203



**Elephant Fun Folding Chair**

5203E



**Monkey Fun Folding Chair**

5203m



**Sloth Fun Folding Chair**

5203S



**Fun dinosaur folding chair**

5203T



**Fun unicorn folding chair**

5203U



**Childrens garden set**

Unicorn - SP2024  
Dinosaur - SP2025



**Quest Kids Moon chair**

Unicorn - SP2035  
Dinosaur - SP2037



watermelon design



orange design



kiwi design



**Table clip 5 colours**

100029

**Fruit Parasol and Beach Umbrella**

SP2004



**Spare Elastics for Relaxer chairs**

124901



**Quest Large Parasol Base**

sp2075



**Quest Medium Parasol Base**

sp2076





**Universal Clamp on  
sun shade**

118914DP



**Recline full seat  
cushion**

F2034



**Relax full seat  
cushion**

F2035



**Black clip on  
Drinks Tray**

F2032



**Furniture Bag  
120 X 70 X 22CM**

124900



**Lounge full seat  
cushion**

F2036



**2.5 Litre  
Whistling Kettle**



CW-T056-B1BL



CW-T056-B1S



CW-T056-B1BLA



CW-T056-B1Cream



CW-T056-B1G



CW-T056-B1Copper



CW-T056-B1R



CW-T056-B1Purple

# Household



**Scotsman low wattage kettle (1L)**

K0032CR - cream  
K0032SL - slate  
K0033 - white



**Scotsman low wattage kettle (1.7L)**

K0030 - black  
K0030CR - cream  
K0030SL - slate  
K0030WH - white



**Rocket low wattage stainless steel kettle (1L)**

K0034CR - cream  
K0034SL - slate  
K0034SS - polished steel



**Rocket low wattage stainless steel kettle (1.7L)**

K0035CR - cream  
K0035SL - slate



**Hamilton stainless steel whistling kettle (2L)**

K0056CR - cream  
K0056SL - slate  
K0056SS - polished steel



**Mallard 12v kettle (1L)**

k0025



**Braunton Collapsible Kettle (0.8L)**

K0026



**Olton aluminium base whistling kettle (2L)**

K0055 - black  
K0055SL - slate  
K0054SL - slate 1L



**Guardsman light up kettle (1L)**

K0057

# Household



**Scotsman low wattage toaster (2 slice)**

K0036B - black  
K0036CR - cream  
K0036SL - slate  
K0036W - white



**Rocket low wattage toaster (2 slice)**

K0038CR - cream  
K0038SL - slate  
K0038SS - polished steel



**Pullman Stainless Steel Toaster**

2068



**Low Wattage Toaster Oven**

7506



**Large low wattage healthy griddle**

K0012



**Low wattage white hot plate (single)**

K0010



**Deluxe Maxi Frypan**

K0051



**700W Microwave 20L (white)**

K0073



**800W Microwave 20L (grey)**

K0074



# Household Melamine



**Sicily 12 Piece  
Melamine Set**

LL1378



**Murano 12 Piece  
Melamine Set**

LL1380



**Capri 12 Piece  
Melamine Set**

LL1382



**Sardinia 12 Piece  
Melamine Set**

LL1384



**Linosa 12 Piece  
Melamine Set**

LL1397



**Graceful Grey  
16pc Melamine Set**

K2022



**Russel Hobbs  
Microwave 20L**

RHM2063AH



**Whistful White  
16pc Melamine Set**

K2032



**Premium Mug Set  
4pc Melamine Set**

K2040

# Household



**EVA Plate & Cup Holder**

LL0926



**EVA Plate Holder**

LL0927



**EVA Plate & Cup Holder**

LL0928



**EVA Cupboard Cup Holder**

LL0071



**Saucepan Protectors (x6)**

23cm LL1567  
38cm LL1568



**Liberty Leisure Cutlery Tray**

LL0921



**XL Door Bin With Brackets - 10 Litres**

LL0848



**Door Bin With Brackets - 6 Litres**

LL0069



**18 piece Cookware Set**

CW-S018

# Household



**2 Piece Pan Set**

k0059



**Egg Poacher**

k0060



**Griddle Pan 24cm**

k0061



**Pizza Pan 26cm**

k0062



**Frying pan  
removable handle**

k0063 - 20cm  
k0064 - 24cm



**3 Piece non-stick  
pan set**

K0068



**Oven range Grill &  
removable handle**

k0065 - 35cm  
k0069 - 28cm



**BBQ/ Oven range  
28cm roaster**

k0066



**BBQ/ Oven range  
28cm oven tray**

k0067

# Household Glasses



**OMADA SAN Wine  
Goblet x2**

M53412SAN



**Omada Tritan  
Water Glasses x2**

M53612TRT



**Tritan Soft Drink  
Clear Glasses**

x2 - M53622TRT  
x4 - M5364TRT



**Omada Pangea 1.2L  
Jug**

M5539TRT\_TR



**Omada Tritan Water  
Clear Glasses**

x4 - M55414TRT  
x2 - M55412TRT



**Omada Tritan Soft  
Drink Glasses**

x4 - M55424TRT  
x2 - M55422TRT



0.5L

M1551.GI - Orange  
M1551.RR - Red  
M1551.TC - Blue



1L

M1553.GI - Orange  
M1553.RR - Red  
M1553.TC - Blue



0.75L

M1552.GI - Orange  
M1552.RR - Red  
M1552.TC - Blue



# Household Glasses



**Everlasting Glass Tumbler 250ml**

0180



**Everlasting Glass Hi Tumbler 440ml**

0181



**Everlasting Glass Wine Goblet 240ml**

0182



**Quest Elegance Range Tumbler**

0184 - smoked  
0184BL - blue  
0184L - lime



**Quest Elegance Range Hi Tumbler**

0185 - smoked  
0185BL - blue  
0185L - lime



**Quest Elegance Wine Glass**

0186 - smoked  
0186BL - blue  
0186L - lime



**Quest Elegance Range Bella Goblet**

0187 - smoked  
0187BL - blue  
0187L - lime

**Did you know you can contact us via whatsapp.**

Just go onto our website and follow the link to chat.



# Household



**Mini oval basket (3L)**

11918AE



**Pet Bowls**

11397AE - Large  
11399AE - Medium



**Simple cutlery holder / drainer**

11717AE



**Water Glass (400ml)**

12838AE



**Square bowl (20cm)**

14078AE



**Classic plate /Dish (25cm)**

14068AE



**Folding Drainer with drip tray**

11182AE



**Long Handled dust pan**

12106AE



**Long Handled dust pan**

12158AE

# Household



**Dish Drainer (med)**

11521AE



**Round Bowls**

11505AE - 3L  
11480AE - 6L



**Square bowls**

11508AE - 3L  
11509AE - 6L



**Small tier cutlery tray**

11823AE



**Pedal Bin**

11978AE



**Chopping Board**

115800AE



**Dustpan**

12429AE



**Small tier cutlery tray / drainer**

118231A



**Food containers**

11859AE

# Household



**Collapsible 10L  
Round Bucket**

K0200



**Collapsible  
rectangular bowl**

k0202



**Collapsible  
washing bowl**

K0211



**Collapsible round  
bowl**

k0203



**Collapsible round  
bowl (small)**

k0212



**Non slip serving tray**

K0205



**Collapsible picnic  
basket and cooler**

K0207



**Collapsible Hipster  
Laundry Basket**

K0209



**Collapsible Dish Rack  
& Cutlery Holder**

K0210



# Household



**Collapsible dish rack  
with cutlery holder**

K0201



**Collapsible strainer**

k0204



**Quest Elite Avon  
Swim bag- Skypod**

F124901SK



**Quest Elite Avon  
Swim bag- Dark Blue**

F124901DB



**Quest Elite Avon  
Swim bag- Pink**

F124901PI



**Quest Elite Avon  
Swim bag- Red**

F124901RE



**Autograph  
Hampshire Coolbag**

E0150

32 x 18 cx 44 cm



**Autograph Essex  
Coolbag**

E0152

36 x 20 x 27 cm



**Autograph  
Wiltshire Coolbag**

E0154

32 x 14 x 22 cm

# Household



**Flexitub Black**

1166002 - 15L  
1187202 - 25L  
11433 - 42L



**Quest King of all trays**

C0063



**Campstore folding tidy storage**

F2040 - medium  
F2041 - large



**Quest folding dish drainer**

031206



**Quest Mini Dish Drainer**

031200



**Quest Universal Oven Shelf**

031249



**Multi height waste bin**

k0048



**De-Luxe Dust Pan & Brush**

1271



## LOYALTY POINTS

Did you know that you can earn loyalty points by purchasing on our website.

# Household



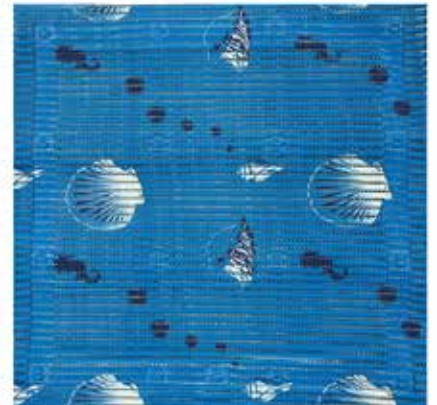
**Cushiontex non-slip matting (30 x 150)**

4701c



**Comfortex non-slip matting (65 x 150)**

4766



**Non slip Shower Mat**

4767



**Quest Clothes Hangers x 8**

031204



**4 Arm Rotary Airing Stand**

4505



**20 x soft touch clothes pegs**

B1009



**Oval 20 Peg Sock Dryer**

C0035



**Round 16 peg hanging Dryer**

C0034



**Cincinnati 50w Cordless Vacuum**

CINCINNATI1PKB2



# Water



**Collapsible Water Carrier 5.5 Litre**

LL1525

Its collapsible design allows for easy storage and portability, making it an ideal companion for camping, hiking, and other leisure activities. It's equipped with a user-friendly tap making dispensing water is a breeze.



**Liberty Leisure Roll On Hose**

LL1562

**Liberty Leisure Pro Hose Reel**

LL1563

**Lay flat 50ft hose with spray gun**

CLYT0708



# Water



**2M Extending Deluxe Wash Brush**

C002



**3M Extending Wash Brush with Squeegee**

C003



**Waterflow Wash Brush**

C0002 - 165  
C0003 - 250



**5Ltr Jerry can**

QW0006



**9.5Ltr Jerry can**

QW0001 - no tap  
QW0002 - with tap



**25Ltr Jerry can**

QW0003 - no tap  
QW0004 - with tap



**23L Waste Can**

QW0005



**Solar Power Shower, pet or vehicle cleaner**

W0100



**Waterless Wash/Wax**

PLA1

# Vehicle Cleaning

## Fenwicks



**Black Streak  
Remover 1L Spray**

0038



**Fenwicks Bobby  
Dazzler 1L**

0205



**Cleaner  
Concentrate 1L**

Motorhome- 0304  
Caravan- 0106



**Waste Pipe and Tank  
Cleaner 1L**

0410



**Top & Tail toilet fluid  
2.5L**

0502



**Fenwicks Over  
Wintering Protector 1L**

0601



**Awning and Tent  
Cleaner 1L Spray**

1820



**Fenwicks  
Windowize 100ml**

1356



**Awning and Tent  
Re-Proofing 1L spray**

1813

# Cleaning Ultra Grime



**40 XXL Wipes  
Multipurpose**

5411



**40 XXL Wipes  
Anti-Bac**

5440

XXL Clothwipes are designed to really get to grips with the daily grime. Bigger, wetter and stronger than regular wipes, they can be used more than once to deal with the biggest spills and toughest jobs thrown at them.



**30 XXL Wipes  
Barbecue**

5450



**40 XXL Wipes Pet  
Care**

5470



**200ml Silicone  
Lubricant Spray**

30003ED



**Toilet Bowl  
Cleaner 750ml**

30337AK



**Duo Tank Cleaner**

30771AK



**Aqua Kem  
Eucalyptus**

30761CX



**Aqua Kem® Blue  
Concentrated**

30621CX



**Aqua Kem® Blue  
Lavender Con.**

30627CX



**Aqua Kem® Green  
Concentrated**

30645CX



**Aqua Rinse  
Concentrated**

30651CX



**Grey water Fresh  
Concentrated**

30700AK





**Aqua Rinse Spray  
500ml**

30831AK



**Powerpods Blue**

30751XX



**Powerpods Green**

30756XX



**B-Fresh Pink Flush  
Water Additive 2ltr**

30552AQ



**Thetford Duo Pack  
Concentrate**

30782DH



**Eucalytus & Grey  
Water Fresh Conc.**

30783DH



**B-Fresh Blue Flush  
Water Additive 2ltr**

30547AQ



**Quick dissolve  
toilet tissue 4 pack**

B0004



**Aqua Soft toilet rolls  
4 roll pack**

4 Pack 202240  
6 Pack 202241

# Cleaning Elsan Chemicals



**Elsan Blue Fluid**

2l - BLU02  
4l - BLU04



**Elsan 1L water fresh**

WATE01



**Blue and Pink 1l Twin Pack**

BP01



**Double Blue & Double Rinse Twin Pack**

2l- DBR02X



**1L clean cassette tank cleaner**

DEEP01



**Descale Calcium & LimeScale Remover**

DESC01



**Elsan 2L Green**

GRE02



**2L Grey waste tank Freshener**

GREY02



**Elsan Pink Rinse 2L**

PIN02

# Cleaning Toilets & Fresh Up Sets



**Porta Potti 145  
Portable Toilet**

92802



**Porta Potti 165  
Portable Toilet**

92806



**Porta Potti 365  
Portable Toilet**

92820



**Porta Potti 335  
Portable Toilet**

92828



**Porta Potti Carry  
Bag Large**

Large- 299901  
Small- 299902



**Fresh-Up Sets**

C200 : 2334062  
C250/C260 :  
9339362  
C400 : 5169062  
C220 : 20087762



**Elsan Blue : Formaldehyde Free**

4L - BLU04F

2L - BLU02F





# Kontrol Damp Control



**Non Spill Dehumidifier  
Scent Free**

MGN00107



**Non Spill Dehumidifier  
(Aqua Trap)**

MGN00111



**Kontrol Mega  
Moisture Trap**

MGN00017



**Moisture trap with  
extra 500g refill**

MGN00016

Kontrol dehumidifiers are compact and ideal for use throughout the home, office and leisure environment. They fit on windowsills, inside drawers, on top of cupboards or even hang from wardrobe rails.

The dehumidifiers require no power and work by attracting and extracting the excess moisture in the air. Like iron filings to a magnet, the calcium chloride within the crystals and tabs readily attracts excess moisture in the air.

By absorbing moisture, the Kontrol dehumidifier prevents the formation of mould with its bad smells.



# Kontrol Damp Control



Designed to help you "Kontrol" excess and unwanted moisture in your home, caravan, office space or anywhere you can reasonably think of. Innovative, effective and affordable solutions to combat damp and resulting unpleasant odours, mould and mildew. Offering complete air care the Kontrol range offers both humidifying and dehumidifying products and we continue to develop and lead market change in this rapidly growing category.



**Lavender mini  
moisture trap**

MGN00006



**Kontrol Refil tabz**

MGN00009



**Kontrol Krystals  
refill pack**

MGN00018 - 500g  
MGN00019 - 2.5kg  
MGN00020 - 1kg

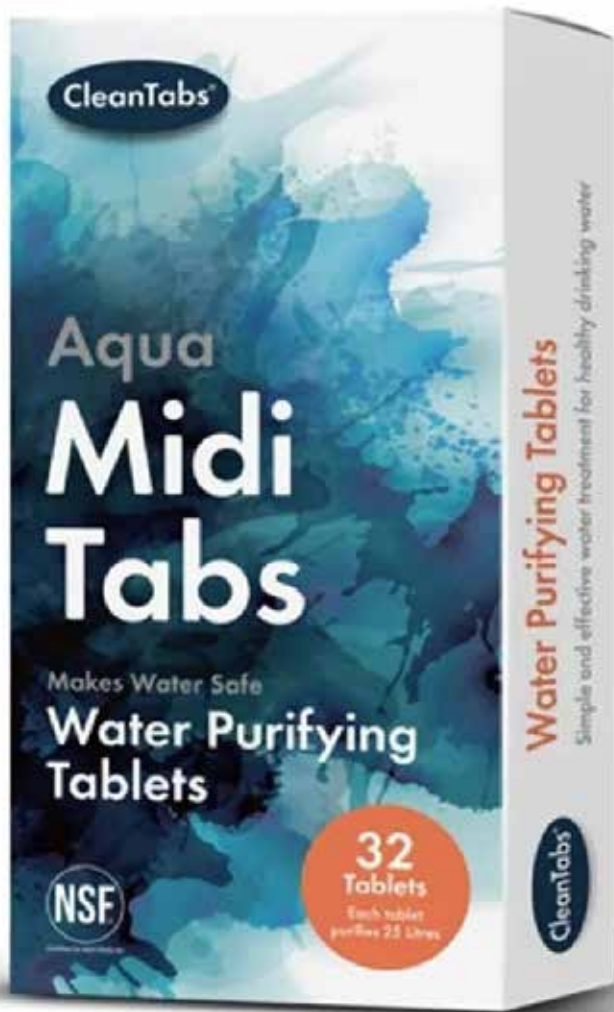


**Kontrol Aqua Trap  
Scent Free**

MGN00080

# Water Purification

## Puriclean- Aquatabs



**NEW  
PACKAGE  
DESIGN!**



**Aqua Midi Water  
Purifying Tablets**

0016

**Aqua Mini Water  
Purifying Tablets**

0025



**100g Water Cleaner &  
Steriliser Powder**

0004



**400g Water System  
Purifier**

0008



**D-Scale Hot Water  
System Cleaner**

1l- 0044

# Alde Anti Freeze



**1L G12++ Premium  
Antifreeze**

4080-141

Alde premium G12++ Antifreeze specially formulated and designed for use in Alde heating systems.

Comes with a 5 year long life span and is suitable for use down to  $-37^{\circ}\text{C}$ .

Capacity: 1 litre.

Concentration: 50/50 ready mixed.

Frost Protection:  $-37^{\circ}\text{C}$  Corrosion Protection: 5 years.

Colour: Purple Magenta.



**4L G13 Premium  
Antifreeze**

4080-142

- Provides 5 year protection.
- Can be used to top-up existing fluids.
- Suitable for all Alde heating systems.
- Facilitates circulation and provides a balanced heating system.
- Forms a protective coating inside the system to prevent corrosion.
- Prevents bacterial growth.
- Pre-mixed with deionised water.



**ALDE 20L Premium  
Antifreeze**

40UK702

Alde have developed a more environmentally friendly replacement for the 25 litre plastic jerrican. The new product comes in a 20 litre Cube.

The 20L Cube is a single use, 100% recyclable container comprising of a splash-proof cardboard box, inbuilt handles and tap and plastic bladder.

The cardboard box can be collapsed and the bladder removed and rinsed, greatly reducing space in dry recycling bins.



# Flooring & Mats



**Marrakesh deluxe outdoor carpet**

Code	Size	Code	Size
A1102-01	250 x 200cm	A1102-13	250 x 450cm
A1102-02	180 x 200cm	A1102-15	250 x 500cm
A1102-03	250 x 250cm	A1102-17	250 x 550cm
A1102-04	250 x 300cm	A1102-19	250 x 600cm
A1102-05	250 x 330cm	A1102-21	250 x 650cm
A1102-07	250 x 350cm	A1102-23	250 x 700cm
A1102-09	250 x 370cm	A1102-25	250 x 750cm
A1102-11	250 x 400cm	A1102-27	250 x 800cm

The construction means it is durable but also breathable so the underlying grass is not killed when used outdoors. It is water repellent and dries quickly, but it does not rot, so it can be used in the dry or wet. The thick nature of the matting and air gaps gives it a padded more comfortable feel than plain reed matting. It is complete with pegging loops on the corners allowing you to anchor it to the ground.



**Easy lock Floor Tiles (x4) with edging strips**

A340093



**Tangier deluxe outdoor mats**

150 x 210 - C0071  
120 x 180 - C0072



**Casablanca deluxe beach mat (70 x 180)**

C0073



# Flooring & Mats



**Washable home is where you tow it (caravan) mat**

C0031N



**Heavy duty Home is where you tow it (caravan) mat**

C0033N



**Heavy duty Home is where you park it (camper) mat**

C0052N



**Heavy duty Home is where you park it (motorhome) mat**

C0053N



**Washable home is where you pitch it (tent) mat**

C0054N



**Heavy duty Home is where you pitch it (tent) mat**

C0077

# Flooring & Mats



**Washable home is where you park it (camper) mat**

C0050N



**Washable home is where you park it (motorhome) mat**

C0051N



**Infinity Scrapper Door Mat 50 x 75cm**

C0028



**FirthTile Rubber Polyprop Mat 40x70cm**

C0025



**Delta Wide Ribbed Mat 40 x 60cm**

C0024

## MANUAL DOWNLOADS

You can download manuals direct from our website. Just visit **MQL.CO.UK**





# Flooring & Mats

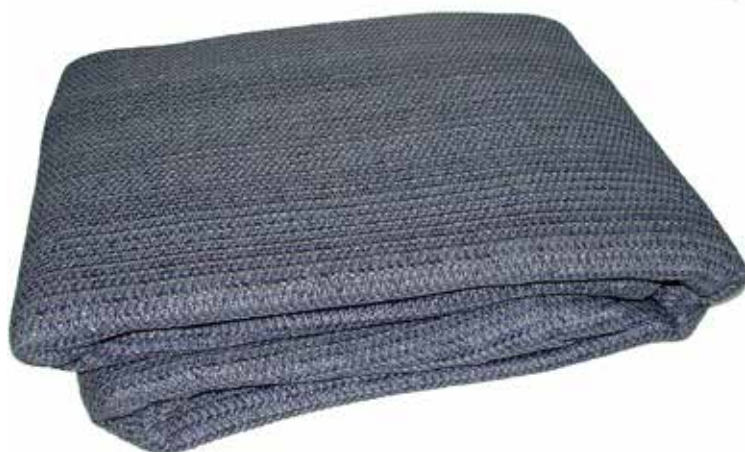


## Airweave Cushioned Awning Carpet

Code	Size
LL0072	2.5 x 2.5m
LL0073	2.5 x 3m
LL0074	2.5 x 3.5m
LL0075	2.5 x 4.5m
LL0076	2.5 x 4m
LL0077	2.5 x 5m

Code	Size
LL0275	2.5 x 5.5m
LL0276	2.5 x 6m
LL0277	2.5 x 6.5m
LL0278	2.5 x 7m
LL0279	2.5 x 7.5m
LL0280	2.5 x 8m

- Breathable & Washable
- Rot-proof
- Fully edged with pegging tags
- Allows grass to breathe
- 100% polypropylene woven tubing
- Reversible design
- Supplied with zipped carry bag



## Breatheweave Cushioned Awning Carpet

Code	Size
LL0299	2.5 x 2.5m
LL0300	2.5 x 3m
LL0301	2.5 x 3.5m
LL0302	2.5 x 4m
LL0303	2.5 x 4.5m
LL0304	2.5 x 5m

Code	Size
LL0305	2.5 x 5.5m
LL0306	2.5 x 6m
LL0307	2.5 x 6.5m
LL0308	2.5 x 7m
LL0309	2.5 x 7.5m
LL0310	2.5 x 8m

- Breathable & washable
- Rot-Proof
- Fully hemmed with eyelets
- Allows grass to breath
- 100% High-Density Polyethylene (HDPE)
- Supplied with zipped carry bag

# Ground Pegs



## Colossal Hard Ground Peg 20 pack

Specifically engineered using the latest technology to deliver the strength to easily glide through your chosen pitch, whether it is on hard standing, stony ground, grass terrain or at the beach.

MQ1374



## Colossal Hard Ground Glow Peg 20 pack

heavy duty rock pegs are ideal for use on hard ground. They are extremely strong and have a tough plastic hook for attaching guylines too. They come complete with their own carry case for easy portability and storage.

MQ1375



## Samson Heavy Ground Screw tent Pegs 20 pack

The most convenient pegs on the market; they can glide through ground much easier than alternative pegs. The pegs are solid and robust, with a tapered steel spike, making them ideal for use within hard or shaley ground.

MQ1377



## T-Bar Stoney Ground Peg 20 pack

Ideal for hard ground pitching thanks to the tough steel T-Bar structure and measures 23cm in length. They can be used for hard and rocky ground and comes complete with a handy storage case.

MQ1373



# Windbreaks



**Quest Falcon 500  
Windbreak**

A1037



**Falcon AirShield 500  
(3 panels)**

a1038



**Falcon AirShield 160  
(1 panel)**

A1039



**Quest Falcon Airshield  
Door**

A1038D



**Screen Shield (1 panel)**

A5510



**Screen Shield (3 panel)**

A5512

# Windbreaks



**Shetland windbreak in charcoal (5 pole)**

MQ0064



**Shetland windbreak in charcoal (7 pole)**

MQ0196



**Shetland windbreak in blue (5 pole)**

MQ0207



**Shetland windbreak in blue (7 pole)**

MQ0203



**Windbreak spare pole**

MQ0208



## PAY ONLINE

Did you know you can pay your invoices online.

**Even pay both Quest and Miriad invoices together !!**



**Compact jockey wheel assembly**

LL1453



**Plastic wheel with rubber Tread**

LL1454



**48mm Pneumatic assembly**

LL1455



**48mm clamp**

LL1456



**Clamp handle**

LL1457



**Spare wheel suits compact assembly**

LL1458



**Spare Pnuematic tyre**

LL1459



**XL Levelling Ramps - 2 Pieces**

LL1559



**Jack Pads with metal Locking Pins**

LL1560



**Single Metal Step**

LL0750



**Double Metal Step**

LL0751



**Single Plastic Step**

LL0824



**Single step in caravan white**

C020



**Double step in caravan white**

C021



**Double step & handrail in caravan white**

C022



**Folding Metal Step**

C0067



**Nose Weight Gauge**

LL0129



**Folding Trolley**

LL1558



# Vehicle Accessories



## **Summit Premium Aluminium Multi-Fit Roof Bars, Lockable**

Ask your sales rep for the list of vehicles each bar fits.



## **Int. 3 piece Thermal Blind**

VW Crafter- TR1010    Ford Custom- TR310  
Fiat Ducato- TR106    VW T6- TR905

The thermal blinds are made with a special quilted fabric with 7 or 9 layers, specially designed to protect against heat or cold.

They are easy to install & remove because they are attached to the glass by the supplied suction cups; in this way they maintain privacy as well as a pleasant temperature inside the vehicle. Also ideal for completely obscuring the light coming from outside.



**VW Crafter Ext.  
Thermal Blind**

AB1010



**Fiat Ducato Ext.  
Thermal Blind**

AB106



**Ford Custom Ext.  
Thermal Blind**

AB310



**VW T6 Ext.  
Thermal Blind**

AB905



**Breathable Towing  
Cover Pro**

SP2112



**Adjustable Caravan  
Towing Cover**

LL1506



**Liberty Leisure 3-4  
Bike Cover**

LL1551



**Liberty Leisure 2-3  
Bike Cover**

LL0588



**CHAT ?**

Fancy a chat ? We can give you support via chat direct from our website.

**MQL.CO.UK**



## Horrex Resizable UCS RK Excellent kit

Code	Size
258.951	1472 x 808
258.954	1172 x 808
258.955	1172 x 501
258.957	872 x 808
258.958	872 x 501
258.96	472 x 808
258.961	472 x 501

Black-out pleated blind with insect screen and side guiding channels for rattle free use and installation on straight windows inside recreational vehicles.



## Caravan Cover Max Green

Code	Size	Measurement
4342G8	Small	360 - 420cm
4343G8	Medium	420 - 510cm
4344G8	Large	510 - 570cm
4345G8	XLarge	570 - 630cm
4346G8	XXLarge	630 - 690cm
4347G8	XXXLarge	upto 8Ft 690 - 750cm



**MOD Table leg system**

Black - BAL-BK-1C-1622  
Silver - BAL-CL-1C-1622



**ReVace 900mm Table Rail**

Black - CC-RV-TR-BK  
Silver - CC-RV-TR-S



**ReVace Adjustable Table Leg**

Black - CC-RV-TL-AJ-BK  
Silver - CC-RV-TL-AJ-S



**Yilkar Air Heater – YH2 Comfort kit**

305.01.YH.200.01DL



**Yilkar Air Heater – YH2 Standard kit**

305.01.YH200.01



**External VW T6 Diesel Heater Bracket**

31.101.11.01801.28





VW T5/6 SWB - AR-RV-MR-T5-LED-BK  
Ford Transit Custom SWB - AR-RV-MR-TC-LED-BK

## ReVace Awning Rail With LED

Included in kit:

- 2650mm Aluminium awning rail
- 2 x flexible end caps
- 2 x threaded hangers
- Fixing adhesive
- 3m cable
- Inline fuse and fuse holder
- 20mm led light switch
- Electrical crimps, heat shrink and conduit
- 220cm led strip pre fitted to awning



Ford Transit Custom SWB Standard - AR-RV-MR-TC-SK-BK  
VW T5/6 SWB To fit Drivers side - AR-RV-MR-T5-SK-BK-D  
VW T5/6 SWB Standard - AR-RV-MR-T5-SK-BK

## ReVace Awning Rail Without LED

Included in kit:

- 2650mm Aluminium awning rail
- 2 x flexible end caps
- 2 x threaded hangers
- Fixing adhesive

# Vehicle Accessories

## Secure Kits



**AL-KO Secure  
Insert Kit No35**

1557310



**AL-KO Secure  
insert kit no44**

1559417



**AL-KO Secure  
insert kit no47**

1559565



**AL-KO Secure  
insert kit no48**

1821118



**AL-KO Secure  
Insert Kit No49**

1821134



**AL-KO Secure  
insert kit no37**

1557613



**Anti-theft device  
Safety Premium  
AKS2004/3004**

1730541

**Westfield®**  
OUTDOORS

**NEBO®**

**elsan**

**REICH**

**PLATINUM  
INTERNATIONAL**

**BRANDS**

Looking for a particular brand - you have a dedicated brands page making it easier for you to find the brand you want.

**MQL.CO.UK**

# Electrical

## Site Leads & Hookups



**Site Mains lead  
(2.5mm core)**

E0037A - 10m  
E0038A - 25m



**Site Mains plug**

E0030



**Site Mains coupler**

E0031



**Site Mains inlet**

E0032



**Site Mains 3 way  
splitter**

E0033



**Site mains hookup  
(UK)**

E0034



**Site Mains Hookup  
(Euro)**

E0035



**Cable Reel 25m**

2060



**Cordwheel**

LL1555



# Electrical Fans & Purifiers



**Room Air Purifier**

T02D



**Plug in Air Purifier**

M03B



**Status Hand Held  
Mini Fans X16**

MIXDPHHFANSX16



**Status 2.5" Hand  
Held Mini Fans X12**

MIXCHHFANSX12



**4" USB Mini Fan  
White metal x4**

SUSBWHWFAN1PKB4



**4" USB Mini Fan  
Black Metal x4**

SUSBBLKWFAN1PKB4



# Electrical Fans & Fridges



**Bahrain 32 inch  
Tower Fan**

E0130



**Bhutan  
Evaporation Cooler**

E0138



**Benin 12 Inch  
Table Fan**

E0133



**Brunei Ice Cooling  
Fan**

E0136



**Burundi 3in1 Multi  
Cooling Fan**

E0137



**Brazil 16 Inch Stand  
Fan**

E0135



**Bolivia 4L  
Evaporation Cooler**

E0134



**Nuuk 3 way fridge**

E0225



## **BARGAINS GALORE**

We have a dedicated sale section on our website, perfect for those bargain hunters.

# Heaters

High quality oil filled radiators. Great when extra heat is required. A lightweight and easy to carry 7 fin oil filled radiator. Has a carry handle and cord storage for ease of portability. It has been pressure tested for safety and is fully CE GE ROHS compliant. The 7 fins helps to give it great heat dispersion allow it to heat up an area more efficiently.



**Maui Oil filled Radiator**

141001



**Bahama oscillating heater**

E0020



**Barbuda ceramic heater**

E0092



**Aruba Slimline Quartz Heater**

208414



**Bali Dual Purpose Ceramic Heater**

047519

# Heaters



**Belarus Ceramic Heater**

E0131



**Belize Ceramic Heater**

E0132



**Vesuvius Gas Heater**  
31 x 15 x 41cm

Black - E0120  
Red - E0120RE



**Krakatoa Gas Heater**  
45 x 31 x 58cm

Black - E0121  
Red - E0121RE



**Etna Gas Heater**  
45 x 39 x 75cm

Black - E0122  
Red - E0122RE



**Fuji Gas Heater**  
45 x 29 x 75cm

Black - E0123  
Red - E0123RE

## CABINET HEATERS

- 4 Sizes
- Complete with regulator
- Ideal for heating an area up
- Perfect for use in conservatories, sheds or any room

# Lighting

## Torches & Lanterns



**Collapsible LED  
Lantern**

E0071



**Big Volt Flashlight**

PLA36



**Big poppy flame  
effect lantern**

NE6908



**Lil Larry torch and  
work light**

NEB-6373-G



**Big Larry 2 torch  
and work light**

NEB-6737-G



**TAC SLYDE Torch**

NEB-6746-G



# Lighting

## Torches & Lanterns



**Newton™ 500 Torch**

NEB-FLT-0014-G



**DAVINCI™ 1000  
Torch**

NEB-FLT-0018-G



**Einstein™ 400  
Headlamp RC**

NEB-HLP-0005-G



**150 Headlamp**

NEB-HLP-7000-G



**Galileo™ 500 lantern  
& power bank**

NEB-LTN-1000-G

# Lighting

## Torches & Lanterns



**FRANKLIN™ DUAL RC  
Torch**

NEB-WLT-0022-G



**Franklin™ Slide RC  
Torch**

NEB-WLT-0025-G

**Franklin™ Pivot RC  
Torch**

NEB-WLT-0023-G



**COLUMBO™ 100  
flash light**

NEB-POC-0006-G

**Motion Sensor Light  
(3 pack)**

NEB-WLT-0026-G

**Slide King 2K  
flash & work light**

NEB-WLT-1003-G

# Lighting

## Torches, Lanterns & String Lights



**Galileo™ 1000 collapsible lantern & power bank**

NEB-LTN-1003-G



**Poppy lantern**

NEB-LTN-6555-G



**Status Crackle Stake Lights**

BUNBURYSSCC63PK6



**Salzburg 200 White lights LED X6**

SALZBURG200BTW6



**100 White LED string lights X6**

WOLFSBERG100BTW6



**Linz 100 Warm White LED String lights X6**

LINZ100BTWW6



**LED Home is where you Tow it Lamps**

E0093



**LED Home is where you park It Camper lamps**

E0095

## SPACIOUS | LUXURIOUS | COMFORTABLE



### Skypod Lair

SKP001

Inner tent size	200 x 140 x 100cm (WxLxH)
Closed size	210 x 140 x 28cm (WxLxH)
Weight	75kg (165lbs)
Sleeping Capacity	2-4 people
Wind Rating	Class 7
Wall	190G rip-stop polycotton PU coated 2000mm
Floor	600D polyoxford PU coated 2000mm

## SPACIOUS | EFFICIENT | COMFORTABLE



### Skypod Rapide

SKP002

Inner tent size	200 x 140 x 75/120cm (WxLxH)
Closed size	223 x 160 x 28cm (WxLxH)
Weight	56kg (123lbs)
Sleeping Capacity	2-3 people
Wind Rating	Class 7
Fly	210D ripstop polyoxford PU 3000mm with silver coating, UPF50+
Inner	190g rip-stop polycotton PU 2000mm
Floor	210D polyoxford PU 2000mm
Cover	600g /1000D high density PVC

## LIGHTWEIGHT | COMPACT | COMFORTABLE



### Skypod Lite

SKP003

Inner tent size	120 x 212 x 95cm (WxLxH)
Closed size	110 x 127 x 32cm (WxLxH)
Weight	34kg (75lbs)
Sleeping Capacity	1-2 people
Wind Rating	Class 7
Fly	210D ripstop polyoxford PU 3000mm with silver coating, UPF50+
Inner	600D ripstop polyoxford PU 2000mm
Floor	210D polyoxford PU coated 2000mm
Cover	600D oxford with PVC coating





### **SkyPod Annexe for Lair & Rapide**

SKP201

Open dimensions	L 305 x W365 x H240cm
Packaging size	127 x 22 x 22cm
Net Weight	11.5kg
Material	210D rip-stop oxford, PU3000mm, UPF 50+
Pole	Fiberglass aluminium, telescopic poles



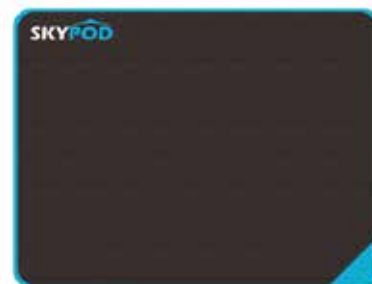
### **SkyPod Inflatable Pillow**

XP-7311



### **SkyPod chair**

FC-347



### **SkyPod 5v Heated blanket**

HB9-447-5V



## Galaxy 2 Air Full Awning

| REMOVABLE FRONT WALL | TINTED WINDOWS | MOSQUITO NETTING |  
| ADVANCED AIR SYSTEM | LARGE PANORAMIC WINDOWS | ZIP BLINDS |

Code	Size	Measurement
12030370800002	Small (size 8)	946 - 980cm
12037090000002	Medium (size 9)	981 - 1015cm
12037100000002	Large (size 10)	1016 - 1050cm
12037110000002	XLarge (size 11)	1051 - 1085cm



| HYDROTECH FABRIC | ADVANCED AIR SYSTEM | ANTI-WEATHER SYSTEM |  
| ANNEX READY | REMOVABLE PANELS | LARGE WINDOWS |

## Pluto 2 Air Full Awning

Code	Size	Measurement
12020370700002	XSmall (size 7)	915 - 945cm
12020370800002	Small (size 8)	946 - 980cm
12020370900002	Medium (size 9)	981 - 1015cm
12020371000002	Large (size 10)	1016 - 1050cm
12020371100002	XLarge (size 11)	1051 - 1085cm
12020371200002	XXLarge (size 12)	1086 - 1121cm



## Pluto 2 XL Air Full Awning

Code	Size	Measurement
12020377003002	XSmall (size 7)	915 - 945cm
12020378003002	Small (size 8)	946 - 980cm
12020379003002	Medium (size 9)	981 - 1015cm
12020371003002	Large (size 10)	1016 - 1050cm
12023711003002	XLarge (size 11)	1051 - 1085cm

The Pluto XL is a traditionally styled full air awning, but with additional depth. This is a true top of the range, luxury air awning with performance, style, classic looks and durability built in.



## Ceres Air Awning

Code	Size	Measurement
12020607000001	XSmall (size 7)	916 - 945cm
12020608000001	Small (size 8)	946 - 980cm
12020609000001	Medium (size 9)	981 - 1015cm
12020601000001	Large (size 10)	1016 - 1050cm
12020601100001	XLarge (size 11)	1051 - 1085cm
12020601200001	XXLarge (size 12)	1086 - 1121cm

A modern designed awning with curve appeal that leaves nothing to be desired for on your holidays. The Ceres air awning has a depth of 260cm giving you the feeling of space.



## Vega 2 Air Porch Awning

Code	Suitable For:	Measurement
12020402350002	Caravan	235 - 255cm
12020403750002	Caravan	235 - 255cm
12020402850002	Motorhome	255 - 285cm
12020375028502	Motorhome	255 - 285cm

It features the luxury HydroTech Cotton Touch fabric which is an all weather, premium fabric with a high performance coating that gives it an extremely high weatherproof rating and helps protect it and you from the harmful U.V. rays. The fabric also has that luxury cotton touch to it making it feel as good as it looks.



## Mars awning

12020501000001

The Mars has been designed specifically for motorhomes with a sliding doors but will work with so many more! It has a unique centre beam that sits higher than the other others to allow the use of a sliding door, but also gives a better door clearance as well.

Equipped with a newly developed HydroTech Ripstop material, the Mars air awning not only offers you a reliable travel companion for your van. In combination with a polyurethane coating, HydroTech Ripstop gets a tactile soft touch character.



# Drive Away Awnings Westfield

## Features

- | HydroTech cotton touch fabric | 2 Year warranty | Any season awning |
- | Advanced air system | Single person pitch | Pano-View | Anti-Weather system |
- | Internal blinds | UV 50+ Protection | Annex ready | Ventilation side windows |
- | Double beading | Velcro in, fully tubed and sealed floor available |
- | Removable panels | Zip on / off tunnel | Rain safe canopy | storm poles (x2) |



### Neptune 400 Air Driveaway Awning

12020364000002

### Neptune Vehicle Connectors

Code	Size	Measurement
12020364024002	Mid	240 - 260cm
12020364026002	High	260 - 280cm
12020364028002	X High	280 - 300cm
12020364030002	XX High	300 - 320cm

### Zodiac Premium Lite air drive away awning

120202403300000

### Zodiac Vehicle Connectors

Code	Size	Measurement
12020240331800	Low	180 - 210cm
12020240332100	Mid	210 - 240cm
12020240332400	High	240 - 270cm



### Orion 2 300 Air Drive Away Awning

120204130000002

### Orion Vehicle Connectors

Code	Size	Measurement
12020413001002	Low	180 - 210cm
12020413002002	Mid	210 - 240cm
12020413003002	High	240 - 270cm

# Drive Away Awnings Westfield



## Aquila Pro 500 performance air drive away awning

12010842000001

## Aquila Pro vehicle connectors

Code	Size	Measurement
12010842100001	Low	180 - 210cm
12022233210240	Mid	210 - 240cm
12010842300001	High	240 - 270cm

hydrotech 150 ripstop fabric	2 year warranty	advanced air system	
single or multipoint inflation	single person pitch	pano-view	
anti weather system	internal blinds	UV 50+	double beading
removable panels	zip on tunnel	tinted windows	rain safe canopy



## Triton 300 performance air shelter and drive away awning

12010273100001

## Triton vehicle connectors

Code	Size	Measurement
12022233180210	Low	180 - 210cm
12022233210024	Mid	210 - 240cm
12022233240270	High	240 - 270cm

hydrotech 150 ripstop fabric	2 year warranty	advanced air system	
single or multipoint inflation	single person pitch	pano-view	
anti weather system	internal blinds	UV 50+	double beading
removable panels	zip on tunnel	tinted windows	

# Accessories

## Westfield



**Neptune 400  
groundsheet (velcro)**

12020362001001



**Orion 300  
groundsheet (velcro)**

12020413010001



**Vega inner tent**

12020400002000



**Eris Air Annex**

12020612000000



**Eris Premium Air  
Annex - Gen 2**

12020612000002



**Universal Air  
Annex**

12020370002000



**Drive Away Kit 4mm -  
6mm Beading**

12010301903000



**Drive Away Kit 6mm -  
6mm Beading**

12010301904000



**Westfield Electric  
pump**

12930010000000



**Windshield pro top cross pole (dog bar)**

1293446070000



**Windshield Pro Sun Canopy**

A1043



**Windshield Pro Expert Edition**

12020304000000



**Windshield Pro Expert Edition Additional Panel**

12020304001000



**Windshield Pro Expert Edition Door Panel**

12020304002000



## MOBILE APP

You can order direct from your phone by using our mobile app

**MQL.CO.UK**



# Accessories

## Westfield



**Kari Sun Roof**

12020423000002



**Kari Sun Roof Side Panels**

12020423001002



**Kari Sun Roof Front Panel**

12020423002002



**Narvi Air Windshield Additional Panel**

120203050010000



**Narvi Air Windshield Main Unit**

120203050000000



**Premium ProStep**

Step - 201-695  
Handrail - 201-698



### Sun Canopy Shady Pro

Code	Size	Suitable for	Suitable for	Suitable for
12022235305000	305cm	Vega	Mars 330	
12022235350000	350cm	Vega 375		
12022235420000	410cm	Galaxy	Pluto size 7	
12022235440000	440cm	Galaxy	Pluto size 8	Ceres size 7
12022235480000	470cm	Galaxy	Pluto size 9	Ceres size 8
12022235500000	500cm	Galaxy	Pluto size 10	Ceres size 9
12022235530000	530cm	Galaxy	Pluto size 11	Ceres size 10
12022235560000	570cm	Galaxy	Pluto size 12	Ceres size 11

This is a premium lightweight sun canopy called the Shady Pro. It can be used standalone by sliding directly into the awning rail on your vehicle or can be attached to your awning (depends upon year of manufacturer).

Made in Germany it is produced to the very highest standards and uses the excellent HydroTech RipStop material which gives you premium performance but helps keep the weight down.

The fabric gives you excellent UV protection as well as a high waterproof rating and is protected against UV damage helping it last longer and look amazing for years to come. It comes with three telescopic poles and guy lines which means it is simplicity itself to erect, so much so it can easily be done by a single person in a matter of minutes.

# Awnings

## Quest Leisure



### Quest Falcon poled porch awning

Code	Size
A3500	220 awning
A3501	260 awning
A3502	325 awning
A3503	390 awning

The Falcon comes in four different sizes (220, 260, 325 and 390) and is a lightweight poled porch awning, that is high on features, ease of use and low on weight and cost. It features an easy to use, minimal quick-fit pole system. This system is quick to put together, lightweight and adjustable to help ensure the best pitching even on uneven ground. The pitching is easy and can be done by a single person if required.

### FEATURES

| Single Person Pitch | Minimal Quick-Fit Frame | Quest Tec 75 Fabric | Very Small Pack Size |

### Quest Falcon air porch awning

Code	Size
A3500A	220 awning
A3501A	260 awning
A3502A	325 awning
A3503A	390 awning



The Falcon Air Porch comes in four sizes. The Falcon Air range uses a lightweight but strong 150D material giving you a perfect balance between light weight, quick drying, performance and price.

The Falcon Air Technology (FAT) system gives you a single main beam which only takes a minute to inflate and even less to deflate! It's held in place by a reinforced sleeve which is then secured to the awning via another zipped sleeve. The added storm straps give you added ground anchorage and protection from the wind.

The Falcon Air range has a roll up front panel that can be used as a canopy when used in conjunction with steel canopy poles.





### Quest Falcon 300 Poled drive away awning

Code	Size
A3507	300 low awning
A3508	300 high awning

The Falcon comes in two different sizes and is a lightweight poled porch awning. This system is quick to put together, lightweight and adjustable to help ensure the best pitching even on uneven ground. The pitching is easy enough to be done by a single person. It uses the modern Quest Tec75 fabric which is lightweight, quick drying and extremely waterproof making the awning easier to use and maintain. It is U.V. coated which helps extend its lifespan.

The awning has additional features such as full mesh doors, roll down, half or full blinds, roll up front panels, sun canopy fronts (if used with the optional universal canopy pole kit). All this plus a very small pack size, light weight and amazing value makes the Falcon an excellent awning.

### Quest Falcon 300 Air drive away awing

Code	Size
A3507A	300 low awning
A3508A	300 high awning



The Falcon Air drive away comes in two different sizes and is a lightweight air porch awning. The Falcon Air Technology (FAT) system is simple and can even be fixed onsite by one person. It comes complete with roof beams (optional for use) to give added stability when needed. Combine this with the lightweight yet durable 150D fabric you get great performance without the weight of heavy awnings. The large panoramic windows allow an amazing amount of light.

The awning has additional features such as full mesh doors, half or full blinds, roll up front panels, sun canopy front (if used with the optional universal canopy pole kit). All this plus a very small pack size, light weight and amazing value makes the Falcon an excellent awning.



# Awnings Quest Leisure



## Quest Falcon Base Air 200

A3519



### Features

- | Quest Tec150 lightweight performance fabric | Falcon Air Tech Air System |
- | Very lightweight | Single person pitch | Small pack size | Pop up inner tent ready |
- | UV 50+ Protection | Internal blinds | Single main air beam for ease of pitching |
- | Three doors | Large windows | Permanent ventilation built in |
- | Ventilation side doors (large) | Sun canopy front panel | Roll up front panel |
- | Rear draught pads | Quick drying | Two way mud wall | Storm straps |

## Condor Air 320 (Main Unit) Drive Away

A3518A



### Features

- | Quest Tec150 lightweight performance fabric | lightweight | Single person pitch |
- | Small pack size | Pop up inner tent ready | UV 50+ Protection | Internal blinds |
- | Extendable size | Two doors | Large windows | Ventilation side doors (large) |
- | Removable front panel | Canopy on the front | Quick drying | Storm straps |
- | Low top or high top connector purchased separately and zips on and off |



**Quest Condor Air  
Tunnel High**

A3518HT



**Quest Condor Air Low  
Tunnel**

A3518LT

Tunnel Code	A3518LT	A3518HT
Connection height (cm)	180 - 210	240 - 270
Kador Length	260 cm	260 cm
Pack Size (cm)	52 x 19 x 19	52 x 19 x 18
Total Weight	2.5 kg	2.5 kg



**Quest Condor Air  
Extension**

Item Code	A3518E
Unit	Extension
Pack size (cm)	59 x 26 x 24
Total weight	6 kg
Pitching weight*	5.5 kg



**Quest Condor Air 320  
Inner Tent**

A3518IT

Inner Tent for  
Condor 320 Air  
Breathable fabric

# Awnings

## Quest Leisure



**Quest Falcon 400 Air Canopy**

A3513



**Falcon 300 / 400 Air Canopy side walls Pair**

A3514



**Quest Falcon 400 Air Canopy Front wall**

A3514FW



**Quest Falcon Air 300 Canopy**

A3517



**Quest Falcon Air 300 Front Wall**

A3517FW



# Awning Accessories



**Deluxe Extendable  
Tarp Poles (Pair)**

A2058



**Pop Up Universal 2  
Berth Inner Tent**

A1002



**3 Berth Universal  
Inner Tent**

4068



**Magnetic Drive  
Away Kit**

A2052



**4 -6mm Deluxe Drive  
Away Kit (3m)**

A2060



**6 -6mm Deluxe Drive  
Away Kit (3m)**

A2062



**Dual (4 & 6mm) Deluxe  
Drive Away Kit (3m)**

A2064



**Dual (4 & 6mm) Deluxe  
Drive Away Kit (4m)**

A2065



**Awning Rail Zip Lu-  
bricant**

7080



# Awning Accessories



**Cyclone High Volume Pump**

A0049



**Leisure Vehicle Wheel cover**

A2050



**Draughtstore deluxe draft skirt and organiser**

A2051



**SuperNova 120 LED light (main unit)**

E0082



**SuperNova 120 LED light (extension unit)**

E0083



**Quest Awning Tie Down Kit**

7035

# Screen Houses & Shelters

## Screen House 4

120053

The original instant screen house, It's a multi-use, perfect for entertaining in the garden, away at events, a covered social area when camping, the uses are almost limitless.

The Screen House features the exclusive premium hub system which gives amazing strength, durability and lasts for years. It has been tested, improved and tuned for over 10 years giving the very best performance. The mechanism is tested for over 10 years worth of use to ensure that it will last. The frame is solid fibreglass, not hollow like its rivals.



### Features

- | Quest Tec210 lightweight fabric | Waterproof roof | Single person pitch | Lightweight | 60 seconds to erect
- | UV 50+ protection | Premium NoChill mesh PRO panels | Premium hub system | Extra pegging points |
- Storm straps | Zip together double doors | Zipped carry bag. | Quick drying |

## Screen House 4 Pro pop up Gazebo

A3000

This is the Pro version of the best selling Screen House 4. It is still the simplest, quickest, easiest and best gazebo on the market. It has 4 sides and is built and designed so one person can erect (or take it down) in less than one minute.

There is nothing to put together or assemble, you simply take it out of the, place it on the floor and open it out. Once opened out simply walk around the screen house pulling each side towards you which pops the side into place, then walk inside and push the roof up.



# Screen Houses & Shelters

## Screen House 6

120051

The screen house gives you a huge amount of usable space as the sides spring out ensuring you can use 100% of the space inside.

The screen house has fully screen sides all around so there is nothing to add afterwards. The screen walls stop those pesky insects getting and actually help keep the wind at bay, but allows airflow to keep it cool.

In sunny weather, the UV coating and shade from the roof along with the fully screened sides make the inside of the screen house cooler than outside.



### Features

- | Quest Tec210 lightweight fabric | Waterproof roof | Single person pitch | Lightweight | 60 seconds to erect
- | UV 50+ protection | Premium NoChill mesh PRO panels | Premium hub system | Extra pegging points | Storm straps | Zip together double doors | Zipped carry bag | Quick drying |

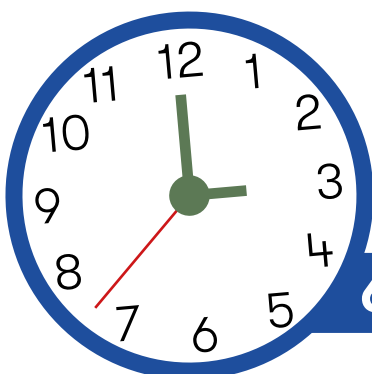
## Screen house 6 Pro pop up Gazebo

A3005

The quickest and easiest quick erect shelter available today.

This is the original screen house with the added pro features of zip down sides, windows, blinds and the accessory zip.

**One Person - One Minute - It is that Easy!**



**60 second pitch**



# Screen Houses & Shelters



**Vehicle Connector  
for Screen House Pro**

A5505



**Pop up Toilet tent**

A1003



**Instant Utility and  
Storage Tent**

120010



**Canopy for Screen  
House Pro 4 and 6**

A5504



**Screen House 4 side  
wall blinds (1 pair)**

120054G



**Nest Shelter**

A3562



**Screen House 6 side  
wall blinds (1 pair)**

120052G



**Screen House 4 Mini  
pop up Gazebo**

A5503



## ONLINE ORDERS

You can order anything you  
want from Miriad or Quest  
on one place:

**MQL.CO.UK**



# Pavillions & Side Walls



## Louisiana Pop Up Pavillion

Code	Colour	Size
A3610	Grey	300 x 300cm
A3610CR	Cream	300 x 300cm
A3611	Grey	300 x 450cm
A3611CR	Cream	300 x 450cm

- Lightweight and durable coated roof
- Waterproof roof
- Quick and Easy to Erect
- Quick release locks
- Premium frame
- Available in two colours and two sizes
- Adjustable height
- Side walls available



## Louisiana Pavillion Side Walls

Code	Colour	Size
A3610SL	Grey	300 x 300cm
A3610CRSL	Cream	300 x 300cm
A3611SL	Grey	300 x 450cm
A3611CRSL	Cream	300 x 450cm

- Each set has 4 sides : 2 x door panels and 2 x window panels
- Lightweight
- Easy to attach
- Velcro's to the roof, pegs at the bottom, velcro straps on the sides
- Two colours available

# Tent & Awning Cleaner

## Fabsil



**Fabsil Std Aerosol  
400ml**

FAB23001



**Fabsil Large  
Aerosol 600ml**

FAB23002



**Fabsil Liquid 1L**

GRFAB47



**Fabsil Liquid 2.5L**

FAB23004



**Fabsil Liquid 5L**

FAB23005



**Fabsil Gold 200ml**

GRFAB50



**Fabsil Gold 1LTR**

GRFAB51



**Fabsil Tent & gear  
cleaner 500ml**

GRFAB54

# Bug Protection

## Quest Kills

It can be used just as a great hanging lantern, or as an effective insect killer, or both at once the choice is yours. You have septa control over the ultraviolet LED used for the insect killer and the extra bright SMD LED light. The lantern contains a premium quality lithium polymer 2000mH rechargeable battery.



**Double action  
lantern & insect killer**

C0091



**Quest Kills Racket  
Zapper**

C0090



**Quest Kills  
Extending Fly swat**

C0089



**Quest Kills Mains  
Insect Killer**

C0088



**Bug stopping - self  
close door screen**

C0023



**Clipper gas refill 300ml**

1184



**Clipper Tube Plus Gas  
Flame Lighter**

1186c



**Slim Single Valve 5kg  
Refillable Gas Cylinder**

400278



**Slim Duo Valve 5kg  
Refillable Gas Cylinder**

400279



**Gas Bank RH Filling  
Adapters and Case**

183075



**Gas Bank LH Filling  
Adapters and Case**

183076



# Toys & Games



**Fun Sport Boules set  
& carry case**

M0023



**Towering Blocks**

M0030



**Car & Caravan die  
cast model set**

M0031



**Camper Van &  
Speedboat model set**

M0032



**Ice Cream Van die  
cast model**

M0033



**Gross Eyeball  
Blinkers**

M0034



**Bubble Wand**

M0035



**Cricket set**

M0036



**Baseball set**

M0037

# Toys & Games



**Archery Set**

M0038



**Dog Ball Thrower**

M0041



**Giant Puffer ball**

M0042



**Motorhome die cast model set**

M0043



**10in Flying Ring**

M0044



**Unicorn Water Game**

M0046



**Dinosaur Water Game**

M0047



**Wooden Beach Bat Set**

M0048

# Gino D'Acampo Pizza Ovens



## Gas Fired Pizza Oven Vesuvio

GP080101

The ultimate choice for pizza enthusiasts. The retro shape and modern matte black finish results in a minimalist yet elegant look.



## Gas Fired Pizza Oven Modena

GP080201

Modena 14" pizza oven is the ultimate choice. Create mouth watering authentic Italian pizza in your own home with this exquisite oven.



## 14" Gas Fired Pizza Oven Carbonio

GP080301

The Carbonio oven eliminates lengthy preheating times and will be ready to go in 15 mins. Once up to temperature, it's superior heat retention will also result in beautiful pizza cooking in just 90 seconds.

# Gino D'Acampo

## Pizza Ovens



**Gino Cast Iron  
Griddle Pan**

GP090101



**Gino Cast Iron Skillet**

GP090102



**Gino Dough Scraper  
(2 set)**

GP090201



**Gino Digital Infrared  
Thermometer**

GP090301



**Gino Wooden  
Handle Wire Brush**

GP090401



**Gino Pizza Serving  
Board**

GP090402



# Gino D'Acampo

## Pizza Ovens



**Gino Rocker Style  
Pizza Cutter**

GP090501



**Gino Pizza Cutter  
Round Blade**

GP090502



**Gino Oil Drizzler  
700ml**

GP090601



**Gino 8" Pizza Turner**

GP090701



**Gino 12" Smooth  
Pizza Peel**

GP090702



**Gino 12" Perforated  
Pizza Peel**

GP090703



**Gino 14" Pizza Oven  
Cover / Backpack**

GP090801

**GINO**  
D'ACAMPO

*My pizza oven*

# GAS BANK

scan for your nearest  
LOG station



## Gas bank Slim single valve 5kg

**400278**

Height- 495mm

Diameter- 230mm

Empty Weight- 4.1kg

LPG Capacity- 9.76l

Propane Capacity- 5kg

Water Content- 12.2l

### Main advantages of composite cylinder:

- Great look
- Easy gas level control, transp. walls
- Cleaning & painting not required
- overfill protection valve
- Ultra low weight
- No rust
- Explosion proof in fire

Refillable gas cylinder for LPG storage used for BBQ, camping, cooking, heating at home, on campervan, caravan, motorhome, boat, for industrial burners and blowtorches or any application where the standard LPG bottle can be used.

Cylinder is equipped with most common in Europe G12 inlet - outlet valve with rubber sealing, known also as KLF - Kleinflashe (G.12). Valve thread is W 21.8 x 1/14 lh.

Unique built in OPD device makes safe refilling at any LPG station possible.

Automatic OPD valve, which automatically stops refilling pump when the gas level reaches 80%.



## LOYALTY POINTS

Start collecting loyalty points on app and online orders now! Earn 1 point for every £ spent!



## LIVE CHAT

Need help? Our friendly team are available via live chat during our office hours.



## WHATSAPP

Need help? Our team are also available via WhatsApp during our office hours.



## FREE DELIVERY

Free next day delivery on orders over £250, placed before 12pm.



01283 586060  
[sales@mql.co.uk](mailto:sales@mql.co.uk)



[mql.co.uk](http://mql.co.uk)